

PALM BEACH

Society

PRESENTING SOCIETY'S 50TH YEAR
NEW YORK SARASOTA NEWPORT THE HAMPTONS

DECEMBER
18-24, 2009
Three Days of Lively Events



Dame Celia Lipton Farris
Honorary Chairman and Chairman Emeritus

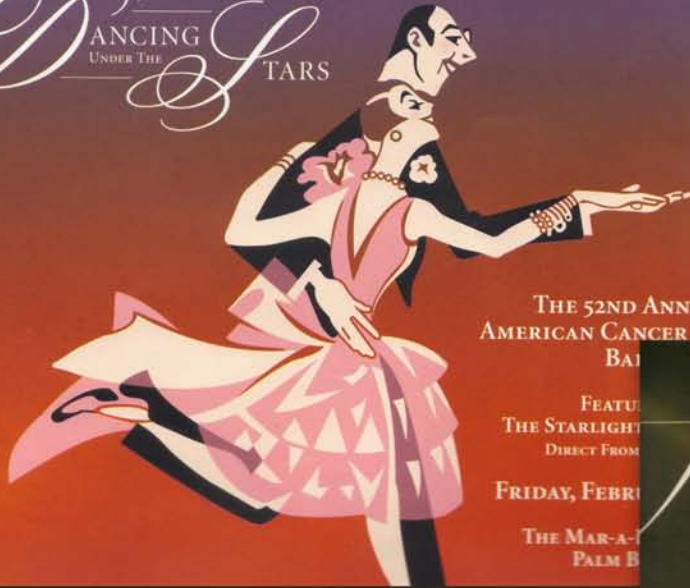


Patrick Park and Nathalie Fernandez
Honorary Chairmen



Patty Myura
Chairman

DANCING UNDER THE STARS

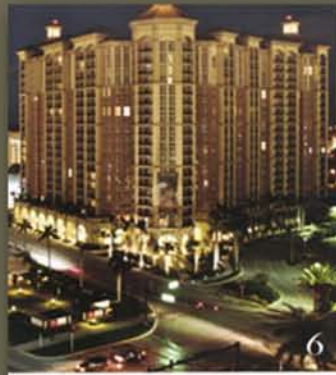


THE 52ND ANNUAL
AMERICAN CANCER SOCIETY
BALLET

FEATURING
THE STARLIGHT
DIRECT FROM

FRIDAY, FEBRUARY 13

THE MAR-A-LAGO
PALM BEACH



THE INSIDE VIEW

- 4 JUNIOR GLITZ
- 5 L'Oréal's 100th Anniversary
- 6 COVER STORY
- 8 Celebrating The Season
- 10 FASHION AVENUE
- 13 Beach Bash
- 14 STEP BY STEP
- 17 Sex2Sea
- 18 DREAMS & DIVERSIONS
- 20 Fashion & Beauty



fashion avenue



By AMY LAGAE

SeaGrape is created by award-winning French jeweler **Jean**, who mastered his craft in Paris and in Switzerland, and designed by **Leslie Manax**, his French-born muse. Native to coastal Florida, the sea grape's lush, circular leaves are the inspiration for their *SeaGrape* jewelry. The first collection of its kind, the designs are handcrafted in precious metals and adorned with gemstones whose colors echo the sea grape's vibrant hues. The sea grape's paradoxical conjuring beauty has an

enchanting story that they love sharing with their collectors — the practical shoreline organism shelters the endangered sea turtle and hawks beach-nesting. I ask Jean his favorite piece, "Our 52 hand is a piece I never take off — has relief engraved with a pair of sea grape leaves and set with a ruby. I wear it on my pointer finger."

Exclusively featured at **Avalon Gallery**, a mecca for handmade jewelry and glass art since 1994, our annual *SeaGrape* cheq Avalon trunk show is slated for January 15-16, 2010; 425 East Atlantic Avenue, Delray Beach. (avalonmiami.com; www.seagraperuby.com)

What are your inspirations?
At Niessen's fluid look and organic motifs, minimalism, original vision, and fine craftsmanship.

Favorite Palm Beach Restaurants?
An ocean-view table at the Ritz, flanked by friends, is our current favorite.

Most of my readers have multiple homes and/or travel extensively. Which pieces from your collection are a must in every suitcase?
Black does this, placed in a ring, or hung on a leather cord, our versatile *Grass* design may be worn as a bracelet or as a pendant. Set off with a single cultured pearl, the piece's satin finish recalls the ocean's salty spray.

Your favorite city in the world?
Depending on our mood, Paris or San Francisco.

Favorite restaurant in the world?
Les Copains District, an artsy neighborhood bistro near Montmartre, where music by some French chanteuses is played live.

